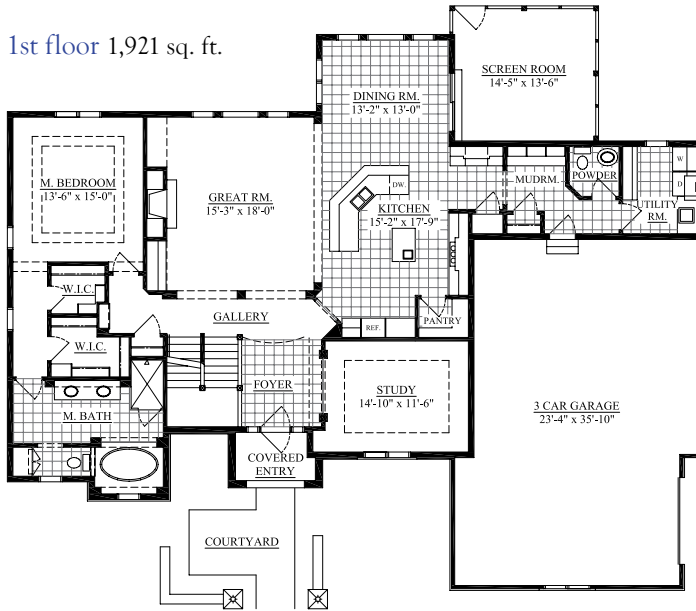
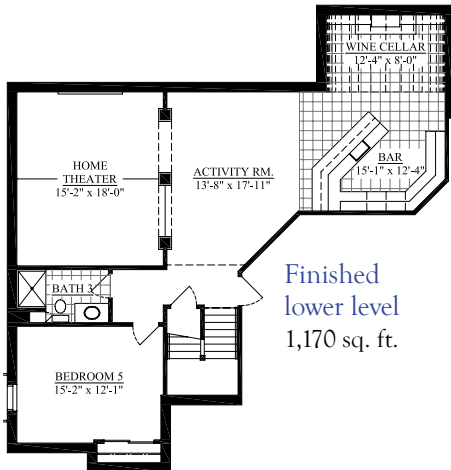
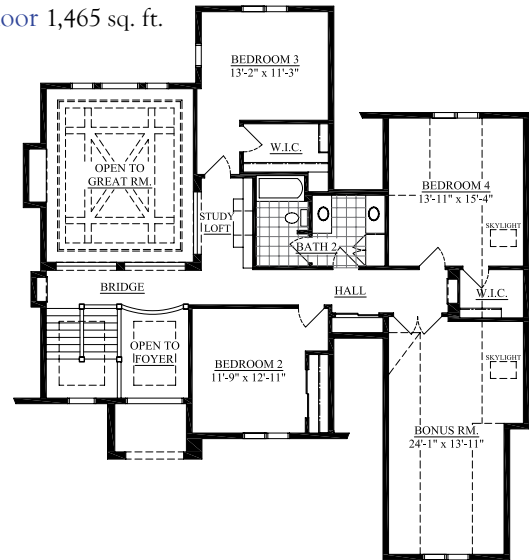




1st floor 1,921 sq. ft.



2nd floor 1,465 sq. ft.



Finished lower level  
1,170 sq. ft.

## The Tuscany 4,556 sq. ft.

- 5 Bedrooms
  - Dimensions: 72' wide x 54'7" deep
  - Garage: 805 sq. ft.
- 3 Bedroom and smaller versions of plan are available.

All dimensions are approximate. These floor plans and artistic renderings of the models may assist the public in visualizing the homes. However, they may not accurately depict actual homes when built. Consult construction plans & specifications for details. We reserve the right to modify plans, specifications and features without prior notice. Pricing and availability of options subject to change without prior notice or obligation. Depending on the status of construction of each individual home, some options may not be available or only be available at a substantial cost to the buyer. Builder reserves the right to make changes or substitutions at anytime without prior notice or obligation. ©2011 Belman Homes, Inc. All rights reserved.



## The Tuscany

### 2011 Metropolitan Builders Association Parade of Homes

**The Tuscany by Belman Builders** is inspired by old world craftsmanship and design from Tuscan and Andalusian architecture with modern twists. Handmade custom cabinets and woodwork blend with the rustic natural stone floors, as well as tall ceilings and archways commonly found in this style of home.

**The true centerpiece of Tuscan lifestyle is the kitchen.** This home is sure to please the largest family with a generous walk in pantry, built in Kitchen Aid® appliances, center island with prep sink and breakfast bar for quick meals. The rich, handmade, custom cabinets will delight both the chefs and artisans in the family. Around the corner, enjoy fresh air from the three season screened-in porch.

**The impressive two story great room** features elegant corbeled archways, transom windows, dry-stacked stone fireplace with media center, and an amazing ceiling. The troweled plaster texture in the great room will whisk you away to a different time and place. Upstairs, the three spacious bedrooms have a compartment bathroom that is sure to delight busy families as well as a centrally located computer workstation.



**Modern conveniences in the bathroom** such as a Kohler® digital shower with wall sprays, rain head, and digital control create a luxurious experience. You will love watching your favorite show in the heated whirlpool with our cleverly hidden television. Growing families will appreciate the mud room cubbies, homework desk, and the sizeable garage bonus room. The finished lower level includes a 5th bedroom, full bath, theater room tucked behind a brick archway, and a wine bistro bar that will please wine enthusiasts.

Total 4,556 sq. ft.; Dimensions: 72' x 57'4"

### Pricing

#### Purchase Price

Excludes furniture, and all accessories.

#### Built on your lot as shown

Excludes furnishings, window treatments, finish basement, and all exterior site/lot improvements. Includes one color interior paint and standard allowance tile and granite.

#### Parade Plan w/ Premier Series Features

Specifications per plan book and on [www.belmanhomes.com](http://www.belmanhomes.com).

#### Finished Lower Level

3 Bedroom and smaller versions of plan are available.

Please see the plan book, [www.belmanhomes.com](http://www.belmanhomes.com), or a salesperson for more details.



*Belman Homes strives to build each home as if it were our very own.*

**Our energy efficient homes** are hand built, stick-by-stick, on site with premium materials and carefully crafted by our loyal tradesmen. We have forged strong relationships with our contractors and work side-by-side with them throughout the years to ensure the finest quality and a smooth process.

Belman Homes is a full service company that specializes in home building of plans, custom homes, land development, condominiums and real estate services. We offer over 50 unique designs to choose from that may be fully customized to meet your needs, with the design cost already included.

We will build on your lot, one of ours, or even help you find one! You will be pleased with the large offering of standard amenities and the personal touches that you can add to your most important investment.